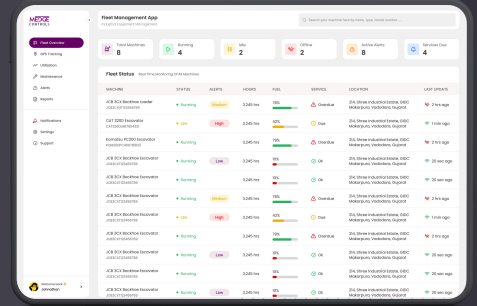


IOT POWERED FLEET & ASSET MANAGEMENT

- Real-time fleet & fuel visibility with built-in intelligence, actionable analytics and AI-driven recommendations
- Easy plug & play setup
- Fully managed white labeled Solution

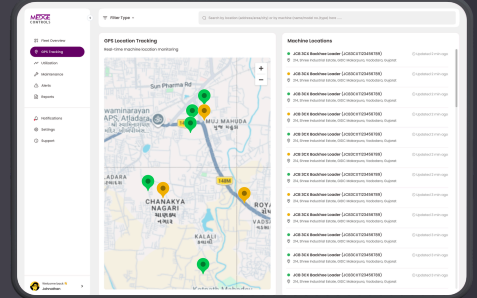
HARDWARE (VEHICLE EDGE DEVICE)

- Industrial-grade edge device for heavy vehicles and mobile assets.
- CANBus (J1939) via OBD or diagnostic port, with inbuilt GSM, GPS, gyroscope & accelerometer for real-time tracking and motion detection.



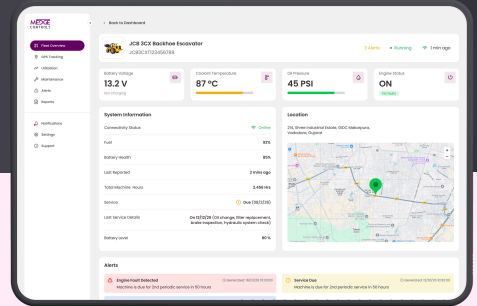
SOFTWARE (CLOUD, MOBILE & AI CHATBOT)

- Access fleet data on mobile and PC via a secure cloud platform.
- AI-powered chatbot enables instant queries for vehicle status, fuel level, trips, alerts, and maintenance information.



SMART FEATURES

- Geofencing, idle & utilization analysis, and critical alerts for fuel theft, engine faults, overspeed, and abnormal behavior.
- Instant alerts via WhatsApp, Email, SMS & AI chatbot.



PROBLEMS WE SOLVE



Engine Health Visibility

Complete visibility of engine health and fuel data across all vehicles.



Fuel Loss Prevention

Prevent fuel losses with real-time theft & abnormal consumption alerts.



Work Verification

Ensure work is actually getting done by identifying idle time vs productive time.



Timely Maintenance

Timely maintenance reminders to prevent breakdowns.



01

Seamless integration with SAP and ERP systems

02

Scalable architecture for multi-vehicle monitoring

03

AI Chatbots with Whatsapp integration - MIRA AI

04

Easy report export to Excel and PDF formats

